



 T R I N I T I

BROCHURE

PLANT MONITORING SERVICES

OUR HISTORY

We are a business and application consulting firm that enables enterprises to improve their performance through various data-driven solutions.

With the advent of Industry 4.0 and Triniti's strong intent to help the customer integrate business data and operations data, we have ventured into value-adding Industrial Internet of Things (IIoT) solutions. Right from identifying the proper hardware to acquiring the operational data, data communication, data insights, analytics, and integration with the business systems, we provide end-to-end solutions and services.

We strongly believe in delivering value through IT-OT integration, and with our proven track record in the business data space, IT-OT integration can help quickly realize the importance of Industry 4.0 solutions to its customers.

PLANT MONITORING SERVICES

Plant maintenance is often a source of untimely, expensive and unplanned equipment downtime. At Triniti, we believe that real-time data is the solution to all your key challenges.

With our expert engineering services, you can maximise efficiency, attain full visibility into your production for complete peace of mind and support your plant operations and maintenance for continuous sustainable growth.

FEATURES OF PLANT MONITORING SERVICES



Provides OEE insights - machine/ line/ plant level



Ability to drill down to individual parameters



Historical data visualization



Web-based interactive data entry



On-demand reports & customizable alerts



Multiple user levels for restricted access

TRINITI PLANT MONITORING SERVICES

DASHBOARD SNAPSHOTS

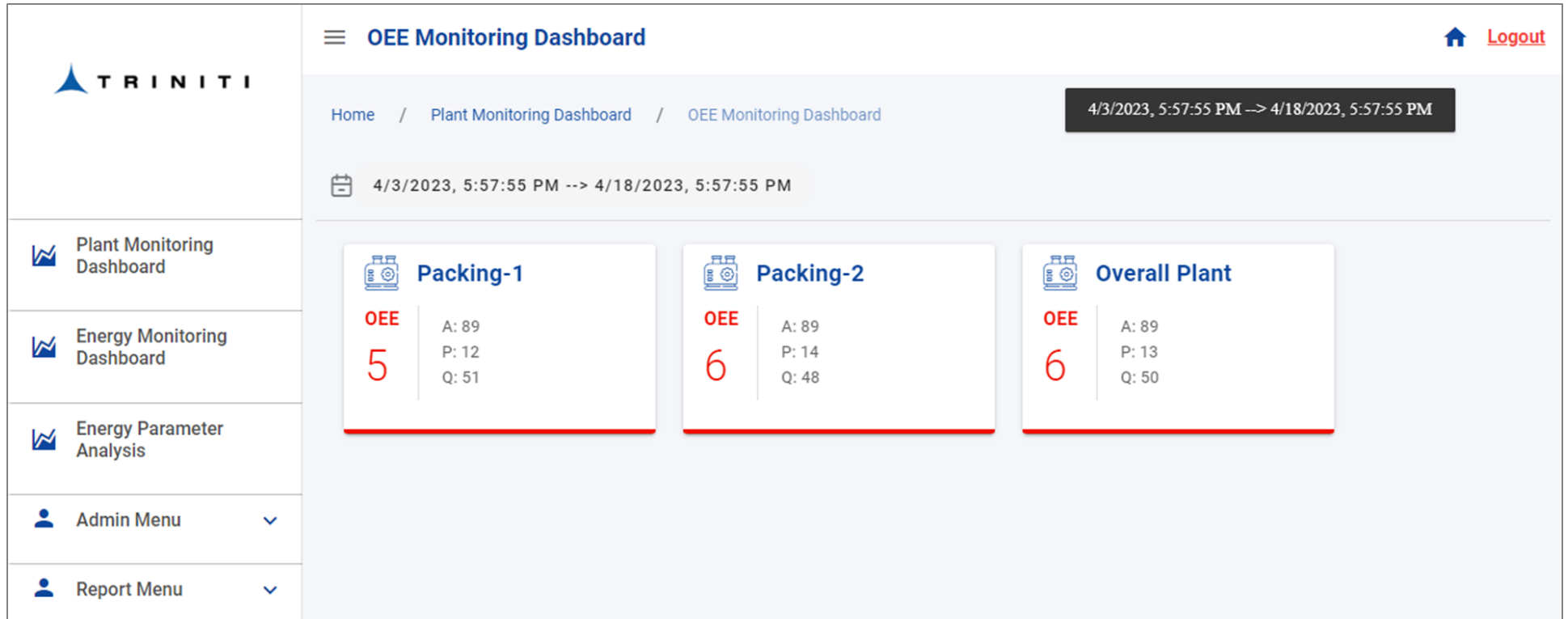
The screenshot displays the Triniti Plant Monitoring Dashboard. The left sidebar contains the Triniti logo, the user name 'Jersey Admin', and navigation links for 'Plant Monitoring Dashboard', 'Energy Monitoring Dashboard', 'Energy Parameter Analysis', 'Admin Menu', and 'Report Menu'. The main dashboard area shows the title 'Plant Monitoring Dashboard', a home icon, a 'Logout' link, and a date range filter for '4/3/2023, 5:57:55 PM --> 4/18/2023, 5:57:55 PM'. Four machine cards are displayed in a 2x2 grid:

Machine Name	State	OEE	Total Uptime	Total Power Consumption	Total Production
Packing-2	OFF	6	115hrs 58mins	0 kWh	155861 units
Packing-1	OFF	5	117hrs 54mins	0 kWh	139818 units
HMZR-Old	ON	0	253hrs 34mins	4672.5 kWh	0 units
HMZR-New	IDLE	0	250hrs 32mins	3049 kWh	0 units

The plant Monitoring page provides a consolidated view of all machines/equipment at the plant level. It details the overall OEE, total power consumption, total uptime, current machine state etc.

TRINITY PLANT MONITORING SERVICES

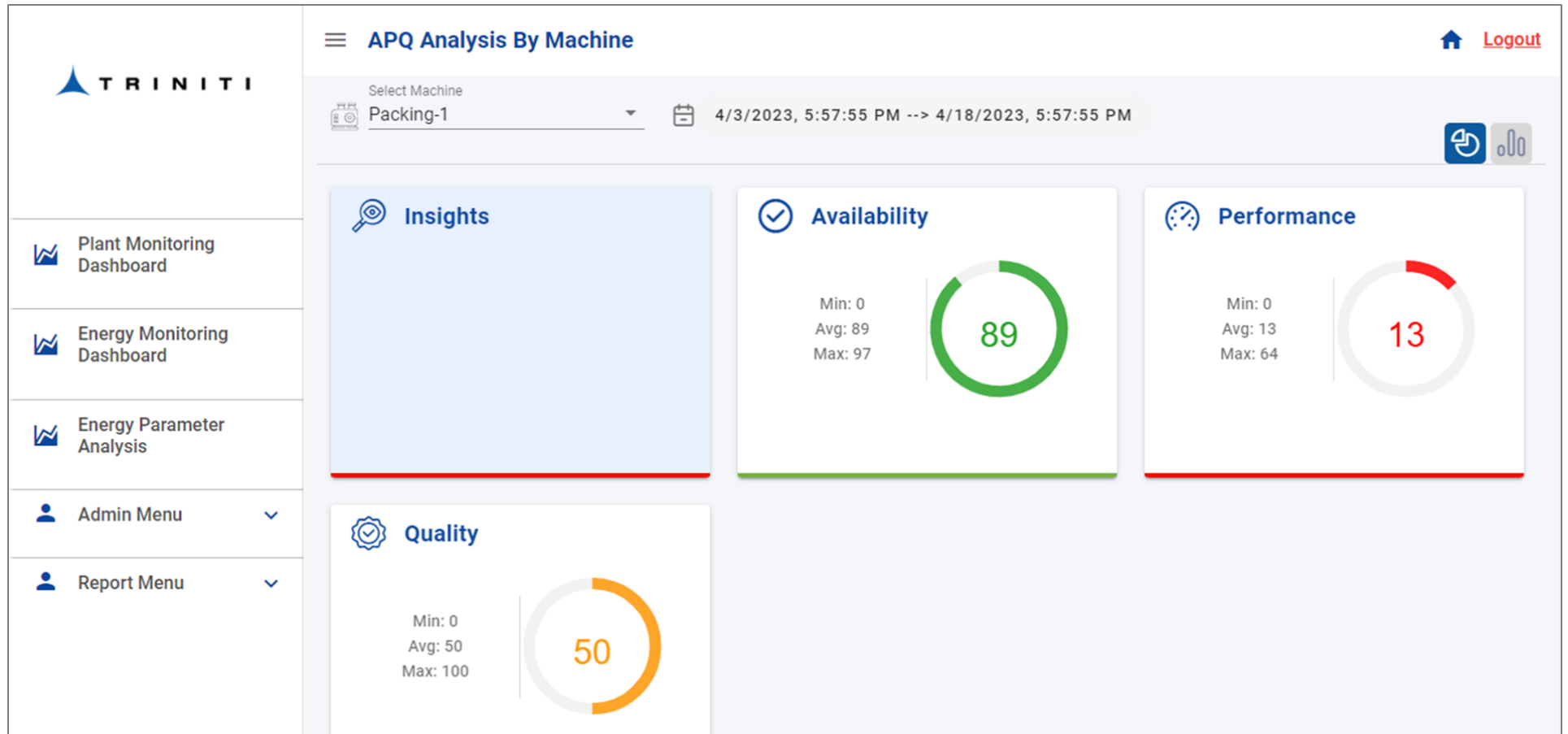
DASHBOARD SNAPSHOTS



The OEE Monitoring dashboard provides a detailed view of the Overall OEE, Availability, Performance and Quality of machines, and also about the plant.

TRINITI PLANT MONITORING SERVICES

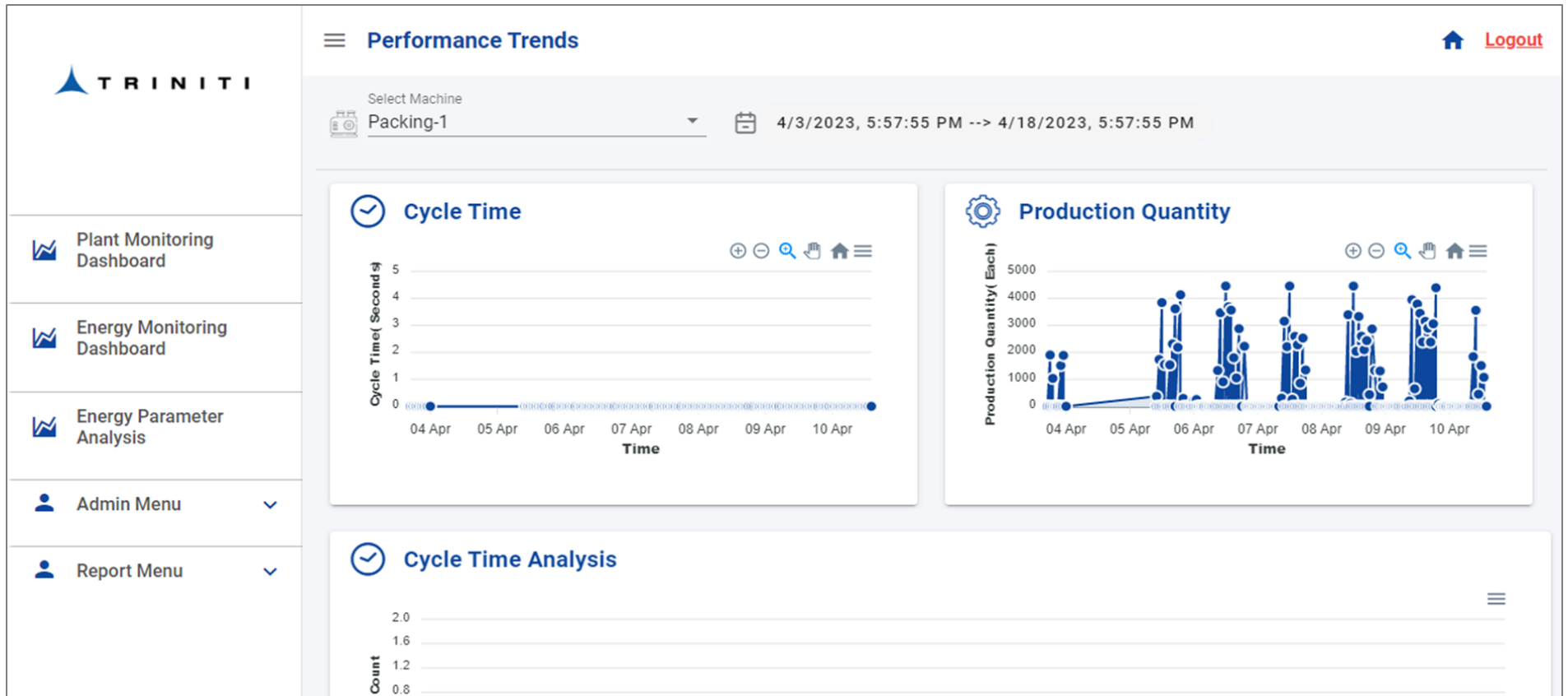
DASHBOARD SNAPSHOTS



APQ Analysis By Machine page details the calculated Availability, Performance and Quality of Machines, Insights generated for OEE for a given period.

TRINITY PLANT MONITORING SERVICES

DASHBOARD SNAPSHOTS



The performance trends page displays trends pertaining to total production quantity, and cycle time for each piece of equipment for the selected duration. It will help engineers analyze the machine behaviour based on historical trends